

# Appendix 8

## Figures from HN2011

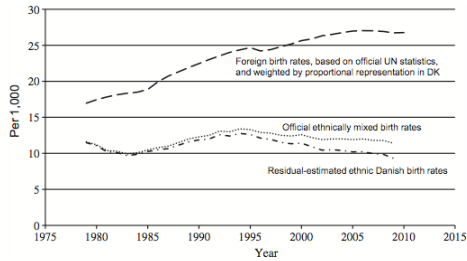


Fig. 1. Average birth rates for the period 1979-2009.

Fig. 1

## Figures from J.E. Vig

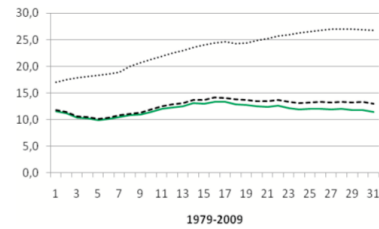


Fig 14B from **perspektiv.pdf**

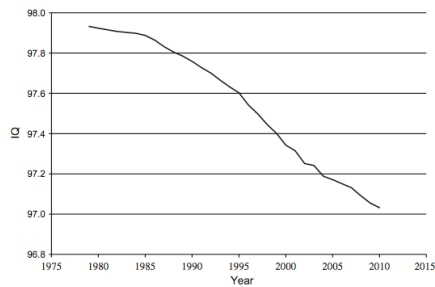


Fig. 3. Overall average DK IQ decline 1979-2010.

Fig. 3. This is an enlargement of the data in the red square in Vig's plot, focusing only on the first 30 years of the curve. The scale of the ordinate in Nyborgs plot has been increased to depict the interval 96.8 to 98.0.

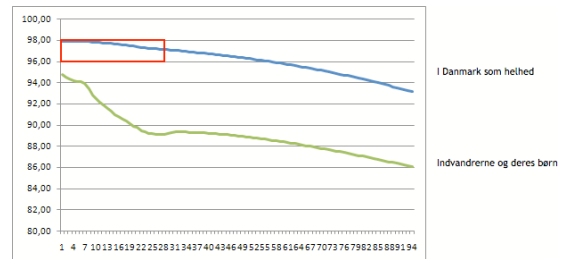


Fig. 2 from Vig's blog [1].

The red area (marked by us) is enlarged by Nyborg in his Fig. 3.

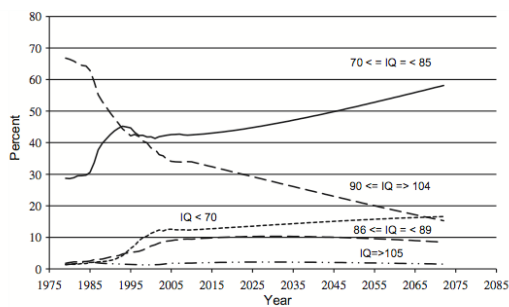


Fig. 4. Retro-corrected (1979-2009) and projected (2010-2072) IQ group shares of foreign births by IQ band.

Fig. 4

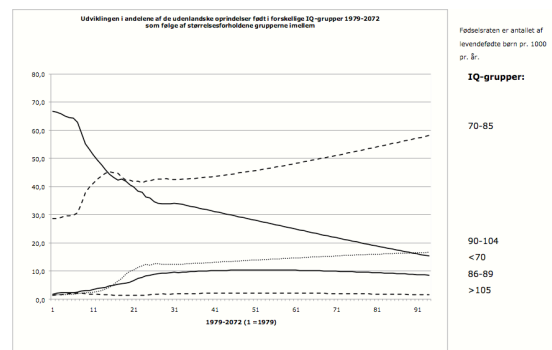


Fig. p. 19 from **perspektiv.pdf**

## Figures from HN2011

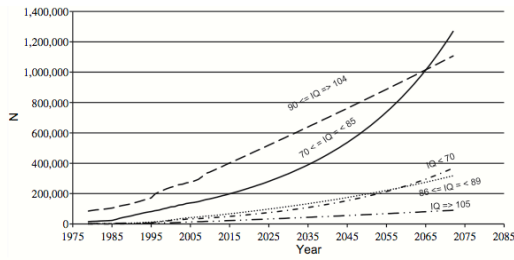


Fig. 5. Estimated (1979-2010) and projected (2011-2072) number of citizens, categorized by 5 IQ bands.

## Figures from J.E. Vig

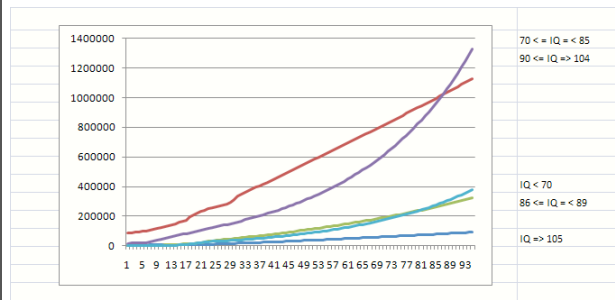


Fig. 1 from Vig's blog [1].

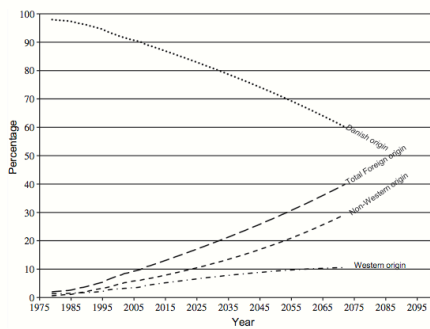


Fig. 6. Retro-estimated (1979-2010) and projected (2011-2072) share of total Danish population by ethnic origin 1979-2072.

Fig. 6

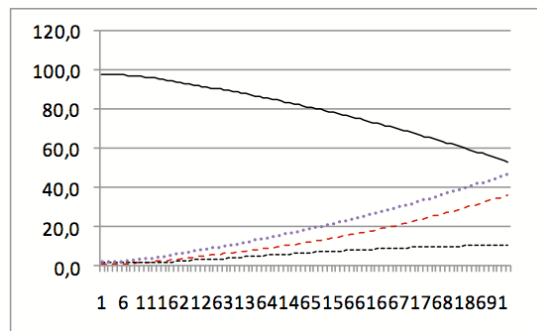


Fig. 10 from **perspektiv.pdf**

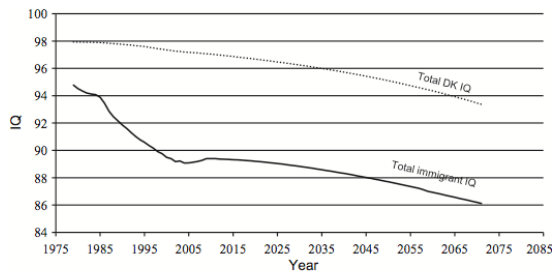


Fig. 7. Retro-estimated (1979-2010) and projected (2011-2072) average phenotypic IQ declines for the total population and for the total group of citizens of foreign origin.

Fig. 7 (figure text re-arranged for clarity)

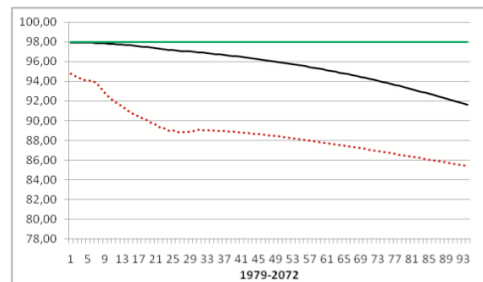


Fig 12 from **perspektiv.pdf**

[1] <http://danmark.wordpress.com/2011/05/23/indvandringen-medfører-at-iq-gennemsnittet-i-danmark-falder-med-yderligere-5-7-point-i-dette-arhundrede/>